

Flea, Lice and Tick Treatment: Treat kennels, pet bedding/rest areas, floor and floor coverings, cracks behind molding and baseboards and other areas where pests may harbor.

Stored Product (Pantry and Fabric/Clothes) Beetles and Moths: Treat cracks, crevices and along the edges of cupboards, closets, pantries, shelving units and storage. Treat voids beneath drawer units by removing the lower drawers and treating the well. Treat the voids beneath shelving units or cabinets by removing the kickplate or drilling small access holes in the kickplate. Treat under rugs and along the edges of carpets and baseboards and other infested areas to control carpet beetles.

Drywood Termite Treatment: For existing infestations of drywood termites, use a drill or probe to locate and access galleries and inject product directly into galleries. An electric or pneumatic duster which produces a pressure of at least 30 psi and no more than 175 psi should be used to force dust throughout galleries. Any holes left in framing covering must be closed and sealed.

Drywood Termite Prevention: Apply at a rate of 1 lb per 1000 square feet in attics and crawlspaces so that the product coats wood members. Drill periodic access holes into wall and ceiling voids and inject the dust at a rate of 1 lb per 1000 square feet of surface area. Insure sufficient holes are drilled to cover interior framing in voids. The working pressure range of electric or pneumatic dusters should be from 30 to 175 psi and the air supply should be dried if the relative humidity is higher than 50%.

Food Processing and Handling Establishment Application, including Federally-Inspected Meat and Poultry Plants: In food areas, only apply dusts in cracks, crevices, and other inaccessible areas. Avoid contamination of food and feedstuffs. Avoid introducing the product into the air. Never apply powder directly to a surface where food is stored, prepared or served. Any dust that is left visible after treatment should be removed and the exposed surface washed. Food areas include: processing areas, including enclosed systems such as syrup and oil plants, dairies, and mills; packing areas, including bottling, canning, wrapping and boxing; receiving areas; storage areas, including edible waste storage; and serving areas, such as dining rooms. In these areas, dust sparingly into cracks and crevices, such as along baseboards and between construction elements. Do not apply in serving areas when facility is in operation or when food is exposed. Do not treat surfaces likely to be contacted by food.

Storage and Disposal

Do not contaminate water, food or feed by storage or disposal.
Storage: Store in a dry place. Do not store where children or animals may gain access.
Disposal: If Empty: Non-refillable container. Do not reuse this container. Place in trash or offer for recycling if available.
If Partly Filled: Call your local solid waste agency or 1-800-CLEANUP which is managed as a public-private partnership.

Manufactured by:
Rockwell Labs Ltd
creating the future of pest control

1257 Bedford Ave
 North Kansas City, MO 64116
 www.rockwelllabs.com

*CimeXa and Creating the Future of Pest Control are trademarks of Rockwell Labs Ltd.
 ©2016 Rockwell Labs Ltd
 Green Zone is not a third party certification.
 V0616-060116*

Doc id: 546056

ACCEPTED
 FOR REGISTRATION
 July 29, 2016

New York State Department
 of Environmental Conservation
 Division of Materials Management
 Pesticide Product Registration

CimeXa™

insecticide dust



For Control of: Ants, Cockroaches, Firebrats, Silverfish, Spiders, Mites, Bed Bugs, Lice, Fleas, Ticks, Stored Product/Pantry/Fabric/Clothes Beetles and Moths & Drywood Termites

EPA Reg. No.: 73079-12
 EPA Est. No.: 73079-MO-1
Net Contents: 4 oz

Active Ingredient: Silicon Dioxide as Amorphous Silica.....92.1%
 Other Ingredients.....7.9%
 Total:.....100.0%

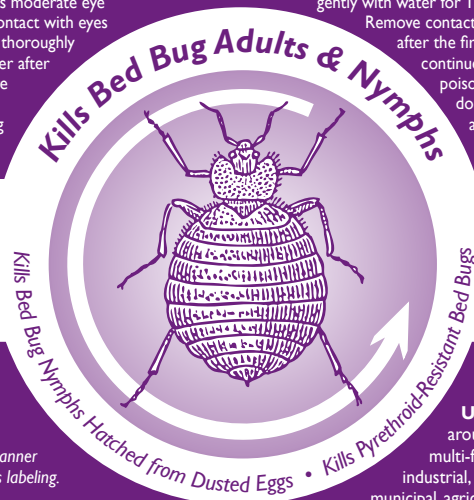
KEEP OUT OF REACH OF CHILDREN CAUTION

PRECAUTIONARY STATEMENTS

Hazards to Humans and Domestic Animals:
CAUTION: Causes moderate eye irritation. Avoid contact with eyes or clothing. Wash thoroughly with soap and water after handling and before eating, drinking, chewing gum, using tobacco or using the toilet.

First Aid

If in Eyes: Hold eye open and rinse slowly and gently with water for 15-20 minutes. Remove contact lenses, if present, after the first five minutes, then continue rinsing eye. Call a poison contact center or doctor for treatment advice.



Lasts Up to Ten Years When Undisturbed

**Odorless
 Non-Staining
 Provides Fast Control**

DIRECTIONS FOR USE

It is a violation of Federal law to use this product in a manner inconsistent with its labeling.

Use Restrictions: In edible product areas of food handling establishments, restaurants or other areas where food is commercially prepared or processed, or in serving areas when food is exposed, this product may only be applied as a crack and crevice treatment. Any product remaining outside of cracks and crevices must be cleaned up and removed.

Application Directions
Use Sites: In and around residential, multi-family, commercial, industrial, institutional, municipal, agricultural, research, daycare, health care, educational, recreational, and office buildings, hotels, motels, garages, transport vehicles, warehouses, theaters, and other manmade structures, and food handling and food processing establishments.

General Information: CimeXa™ is a desiccant dust that has no odor and will not stain. When pests contact CimeXa™, the product clings to their exoskeleton and absorbs the waxy coating, causing death from dehydration.

Application Rates and Methods: Apply at a rate of 2 ounces per 100 square feet. In attics and crawlspaces, apply at a rate of 1 lb per 1000 square feet. Use a handheld bellows, bulb or puffer bottle type duster to apply a light, visible film. A craft or paint brush is useful for pushing dust into cracks and crevices, and into tufts and folds of mattresses and cushions. A power duster may also be used. **Power duster use is limited to cracks, crevices, voids, attics and crawlspaces to insure containment of dust particles.** **Liquid Application:** The product may be used as a spray, paint on application, or foam. Combine up to 1 lb of product with 1 gallon of clean water. Apply approximately 1 quart of product/water slurry per 250 square feet of area to be treated. The product does not dissolve in water and will be left behind and visible after evaporation. For injection treatment, add the appropriate amount of foaming agent to the product/water slurry and inject directly into galleries and voids.

General Pest (Ants, Cockroaches, Firebrats, Silverfish, Spiders, Mites) Treatment: Treat attics, crawl spaces, trash closets, utility closets, behind baseboards, around the perimeter of dropped ceilings, in hollow furniture legs; under and behind bedding, appliances and vending machines; in wall voids and voids under and behind cabinets, sinks and tubs; in drawer wells, garbage chutes, pipe chases, weep holes in brick or siding, elevator pits, around drains, around electrical conduits and in cracks and crevices where insects may harbor. Focus application in areas where insects or their signs are seen.

Application tips for certain use sites follow:

1. In attics, be sure to get dust near the eaves and vent pipes where insects often first enter; as well as around any pipes or potential access points between the attic and the main structure.
2. When treating cabinetry areas, if there is no gap between the lower cabinets and the kickplate, then small holes can be drilled to access the voids. Escutcheon plates around pipes can also be pulled back to allow access to voids.
3. The bottom drawers in kitchen and bathroom cabinets can be removed and dust applied into drawer wells. No dust should be left exposed when drawers are replaced.
4. Electrical switch plate covers can be removed to allow access to voids, but dust shouldn't be applied directly in electrical boxes.
5. If there are cracks between baseboards, cabinets, doorframes, hinges, counters or trim, and walls, these cracks can be lightly dusted with product. If practical, these areas can be sealed once insect problems have been eliminated, to help prevent future problems.
6. Insects need moisture, so kitchen and bath areas and areas immediately surrounding them, and any other damp areas should be carefully inspected and treated if necessary.

Bed Bug Treatment: Remove bedding and take the bed apart. Treat the interior framework, joints and cracks in the bed frame. Treat the mattress and box spring, paying particular attention to tufts, folds and edges, and the interior framework of the box spring. Remove wall-mounted head boards and treat the back side. Treat picture frames, moldings, hollow furniture legs, cracks and crevices, along baseboards, and any areas with visible signs of infestation, including rugs and carpet. Treat upholstered furniture by removing or lifting (if possible) the cushions and treating the undersurface. Treat the interior framework, cracks and joints of the furniture, and the folds, tufts and edges of cushions and other upholstered areas. Do not treat toys and stuffed animals with product. Treat wall voids by removing electrical switch plate covers to allow access, but don't apply dust directly in electrical boxes. Apply about 1/4 oz of dust to each accessible void.

ACCEPTED
FOR REGISTRATION
July 29, 2016

New York State Department
of Environmental Conservation
Division of Materials Management
Pesticide Product Registration

CimeXa™

insecticide dust



For Control of: Ants, Cockroaches, Firebrats, Silverfish, Spiders, Mites, Bed Bugs, Lice, Fleas, Ticks, Stored Product/Pantry/Fabric/Clothes Beetles and Moths & Drywood Termites

EPA Reg. No.: 73079-12
EPA Est. No.: 73079-MO-1
Net Contents: 5 lbs

Active Ingredient: Silicon Dioxide as Amorphous Silica.....92.1%
Other Ingredients.....7.9%
Total.....100.0%

KEEP OUT OF REACH OF CHILDREN CAUTION

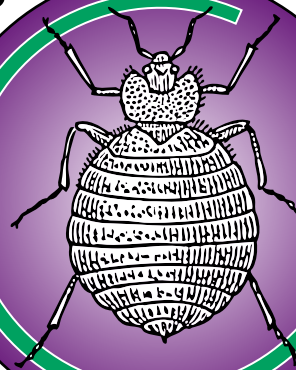
PRECAUTIONARY STATEMENTS

Hazards to Humans and Domestic Animals: CAUTION:
Causes moderate eye irritation. Avoid contact with eyes or clothing. Wash thoroughly with soap and water after handling and before eating, drinking, chewing gum, using tobacco or using the toilet.

First Aid

If in Eyes: Hold eye open and rinse slowly and gently with water for 15-20 minutes. Remove contact lenses, if present, after the first five minutes, then continue rinsing eye. Call a poison control center or doctor for treatment advice.

Kills Bed Bug Adults & Nymphs



Lasts Up to Ten Years When Undisturbed

**Odorless
Non-Staining
Provides Fast Control**

DIRECTIONS FOR USE

It is a violation of Federal law to use this product in a manner inconsistent with its labeling.

Use Restrictions: In edible product areas of food handling establishments, restaurants or other areas where food is commercially prepared or processed, or in serving areas when food is exposed, this product may only be applied as a crack and crevice treatment. Any product remaining outside of cracks and crevices must be cleaned up and removed.

Application Directions

Use Sites: In and around residential, multi-family, commercial, industrial, institutional, municipal, agricultural, research, daycare, health care, educational, recreational, and office buildings, hotels, motels, garages, transport vehicles, warehouses, theaters, and other manmade

structures, and food handling and food processing establishments.

General Information:

CimeXa™ is a desiccant dust that has no odor and will not stain. When pests contact CimeXa™, the product clings to their exoskeleton and absorbs the waxy coating, causing death from dehydration.

Application Rates and Methods: Apply at a rate of 2 ounces per 100 square feet. In attics and crawlspaces, apply at a rate of 1 lb per 1000 square feet. Use a handheld bellows, bulb or puffer bottle type duster to apply a light, visible film. A craft or paint brush is useful for pushing dust into cracks and crevices, and into tufts and folds of mattresses and cushions. A power duster may also be used. **Power duster use is limited to cracks, crevices, voids, attics and crawlspaces to insure containment of dust particles.**

Liquid Application: The product may be used as a spray, paint on application, or foam. Combine up to 1 lb of product with 1 gallon of clean water. Apply approximately 1 quart of product/water slurry per 250 square feet of area to be treated. The product does not dissolve in water and will be left behind and visible after evaporation. For injection treatment, add the appropriate amount of foaming agent to the product/water slurry and inject directly into galleries and voids.

General Pest (Ants, Cockroaches, Firebrats, Silverfish, Spiders, Mites) Treatment: Treat attics, crawl spaces, trash closets, utility closets, behind baseboards, around the perimeter of dropped ceilings, in hollow furniture legs; under and behind bedding, appliances and vending machines; in wall voids and voids under and behind cabinets, sinks and tubs; in drawer wells, garbage chutes, pipe chases, weep holes in brick or siding, elevator pits, around drains, around electrical conduits and in cracks and crevices where insects may harbor. Focus application in areas where insects or their signs are seen.

Application tips for certain use sites follow:

1. In attics, be sure to get dust near the eaves and vent pipes where insects often first enter, as well as around any pipes or potential access points between the attic and the main structure.
2. When treating cabinetry areas, if there is no gap between the lower cabinets and the kickplate, then small holes can be drilled to access the voids. Escutcheon plates around pipes can also be pulled back to allow access to voids.
3. The bottom drawers in kitchen and bathroom cabinets can be removed and dust applied into drawer wells. No dust should be left exposed when drawers are replaced.
4. Electrical switch plate covers can be removed to allow access to voids, but dust shouldn't be applied directly in electrical boxes.
5. If there are cracks between baseboards, cabinets, doorframes, hinges, counters or trim, and walls, these cracks can be lightly dusted with product. If practical, these areas can be sealed once insect problems have been eliminated, to help prevent future problems.
6. Insects need moisture, so kitchen and bath areas and areas immediately surrounding them, and any other damp areas should be carefully inspected and treated if necessary.

Bed Bug Treatment: Remove bedding and take the bed apart. Treat the interior framework, joints and cracks in the bed frame. Treat the mattress and box spring, paying particular attention to tufts, folds and edges, and the interior framework of the box spring. Remove wall-mounted head boards and treat the back side. Treat picture frames, moldings, hollow furniture legs, cracks and crevices, along baseboards, and any areas with visible signs of infestation, including rugs and carpet. Treat upholstered furniture by removing or lifting (if possible) the cushions and treating the undersurface. Treat the interior framework, cracks and joints of the furniture, and the folds, tufts and edges of cushions and other upholstered areas. Do not treat toys and stuffed animals with product. Treat wall voids by removing electrical switch plate covers to allow access, but don't apply dust directly in electrical boxes. Apply about 1/4 oz of dust to each accessible void.

Flea, Lice and Tick Treatment: Treat kennels, pet bedding/rest areas, floor and floor coverings, cracks behind molding and baseboards and other areas where pests may harbor.

Stored Product (Pantry and Fabric/Clothes) Beetles and Moths: Treat cracks, crevices and along the edges of cupboards, closets, pantries, shelving units and storage. Treat voids beneath drawer units by removing the lower drawers and treating the well. Treat the voids beneath shelving units or cabinets by removing the kickplate or drilling small access holes in the kickplate. Treat under rugs and along the edges of carpets and baseboards and other infested areas to control carpet beetles.

Drywood Termite Treatment: For existing infestations of drywood termites, use a drill or probe to locate and access galleries and inject product directly into galleries. An electric or pneumatic duster which produces a pressure of at least 30 psi and no more than 175 psi should be used to force dust throughout galleries. Any holes left in framing covering must be closed and sealed.

Drywood Termite Prevention: Apply at a rate of 1 lb per 1000 square feet in attics and crawlspaces so that the product coats wood members. Drill periodic access holes into wall and ceiling voids and inject the dust at a rate of 1 lb per 1000 square feet of surface area. Insure sufficient holes are drilled to cover interior framing in voids. The working pressure range of electric or pneumatic dusters should be from 30 to 175 psi and the air supply should be dried if the relative humidity is higher than 50%.

Food Processing and Handling Establishment Application, including Federally-Inspected Meat and Poultry Plants: In food areas, only apply dusts in cracks, crevices, and other inaccessible areas. Avoid contamination of food and feedstuffs. Avoid introducing the product into the air. Never apply powder directly to a surface where food is stored, prepared or served. Any dust that is left visible after treatment should be removed and the exposed surface washed. Food areas include: processing areas, including enclosed systems such as syrup and oil plants, dairies, and mills; packing areas, including bottling, canning, wrapping and boxing; receiving areas; storage areas, including edible waste storage; and serving areas, such as dining rooms. In these areas, dust sparingly into cracks and crevices, such as along baseboards and between construction elements. Do not apply in serving areas when facility is in operation or when food is exposed. Do not treat surfaces likely to be contacted by food.

Storage and Disposal

Do not contaminate water, food or feed by storage or disposal.

Storage: Store in a dry place. Do not store where children or animals may gain access.

Disposal: If Empty: Non-refillable container.

Do not reuse this container. Place in trash or offer for recycling if available. **If Partly Filled:** Call your local solid waste agency or 1-800-CLEANUP which is managed as a public-private partnership.

Manufactured By:



1257 Bedford Ave
North Kansas City, MO 64116
www.rockwellllabs.com

